

# LYLA™ 2 DESIGN EDITION

# LELO

The Remote-Controlled Egg Massager with Unparalleled Performance

Lyla 2 Design Edition is an upgraded version of the world's premium remote-controlled massager, for turning on pleasure even at a distance. Based on the original SenseMotion™ Lyla, Lyla 2 features a 3X greater wireless range and 50% more vibration intensity alongside enhanced motion-controlled functions. Worn internally or enjoyed externally, the waterproof and rechargeable Lyla 2 can be controlled via simple movements applied to its ultra-discreet controller, for a new way to share pleasure both indoors and out.

8 Stimulation Modes (2 SenseMotion™ / 6 Standard Control)

## ORDERING REFERENCE NUMBER (EAN)

7350022 275928 (BLACK)  
7350022 275911 (DEEP ROSE)  
7350022 275904 (CERISE)

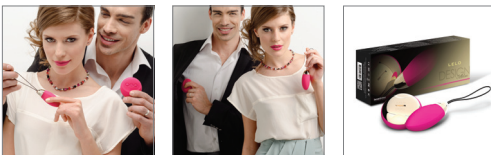
## AVAILABLE COLORS



## TECHNICAL DATA:

**FDA-Approved Materials:** Phthalate-Free Silicone and ABS Plastic  
**Finish:** Matte Silicone / Shiny ABS Plastic  
**Size:** 80 X 33 X 32mm / 3.15 X 1.3 X 1.3 in.  
**Weight:** 36g / 1.27 oz.  
**Battery:** Li-Ion 200 mAh  
**Charging:** 2 h at 5.0 V 200 mA  
**User Time:** Up to 2 hrs (Lyla 2) 10 hrs (controller)  
**Standby:** Up to 90 days  
**Frequency:** 120Hz  
**Max Noise Level:** <50dB  
**Wireless Range:** Up to 36 meters / 118 feet (in controlled environment)  
**Contents:** Lyla 2 Design Edition, wireless remote, charger, 2 X AAA batteries, Insignia brooch, antibacterial storage pouch, 1-year warranty

## PRODUCT IMAGES



Product images and additional promotional materials available when you register in the Retailer section at [www.lelo.com/retailer](http://www.lelo.com/retailer)







## SHIPPING & CASE PACK DETAILS

**Packing box size:** Lyla 2 Design Edition 268 X 110 X 57mm / 10.60 X 4.33 X 2.24 in.  
(Same dimensions as: GIGI, LIV, BILLY, Tiani and Oden)

**Case Dimensions (White Box):** 576 X 348 X 120mm / 22.68 X 13.7 X 4.72 in.  
**No. of products in case:** 12

**Shipping box:** 605 X 380 X 405mm / 23.82 X 14.96 X 15.94 in.  
**Total units per final shipping box:** 36 (12 per Case)



FEATURES	BENEFITS
<b>The Remote-Controlled Egg Massager with Unparalleled Performance</b> 	Lyla 2 Design Edition is among the most versatile of massagers; perfect for internal as well as external massage with wireless controls and SenseMotion™ Technology. No other egg-like massager has the range or possibilities, where the ultra-quiet controller adjusts vibration patterns at a greater distance than any product of its kind.
<b>Wireless Controls with SenseMotion™ Technology</b> 	The Lyla 2 controller adjusts vibration speed and intensity through the user's choice of 6 pre-set patterns or 2 SenseMotion™ modes. In SenseMotion™ settings a simple flick of the wrist will create new vibration patterns or you can control them directly through an easy-to-use 3-button interface.
<b>Fully-Waterproof and Rechargeable</b> 	Lyla 2 Design Edition and its wireless controller are both completely waterproof for easy cleaning and use in the bath or shower. Lyla 2 is also fully-rechargeable for added convenience (controller requires 2 AAA batteries – included).
UPGRADES	BENEFITS
<b>3X Wireless Range for Enhanced Functionality</b> 	Insignia 2 Design Edition massagers boast 3 times the wireless range and signal strength of the original designs, able to relay signals from a distance of up to 36 meters (118 feet) depending on the environment.
<b>50% More Power and Additional Control Options</b> 	Insignia 2 Design Edition massagers feature motors with 50% more power than the original SenseMotion™ series, and can now be controlled with or without the wireless remote using a multi-functional button on the massager itself.
<b>LELO Quality Standards</b> 	FDA-approved body-safe silicone and ABS CE & RoHS certified Fully Lockable Award-winning packaging Full 1-year warranty